



AROP | **AKRON
RITES OF PASSAGE
INSTITUTE**

legacy building project



ROBERT P. MADISON
INTERNATIONAL, INC.

ARCHITECTS • INTERIORS • PLANNERS

purpose

To **educate, train, and empower** its members and participants on the African Centered Rites of Passage process, thoughts, and practice.

To **support and promote all aspects of the healthy growth and development of individuals, families, and the community** of those of African descent in the Akron, Summit County, and surrounding area.

To function exclusively **for the charitable, educational, and achievement of the scientific goals of reclaiming, restoring and rebuilding the wholeness and welfare of those of African Descent.**



afro futurism

Black identity, agency and freedom through art, creative works and activism that envision liberated futures for Black life.

Afrofuturism Involves **reclaiming agency over one's story**, and reclaiming the history of African descendants to inspire Black futures.

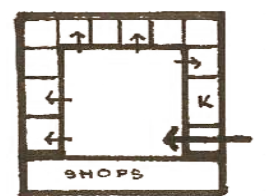
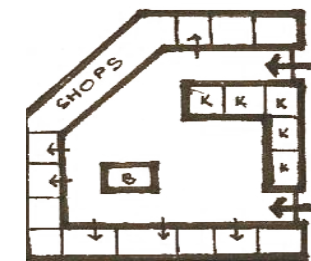
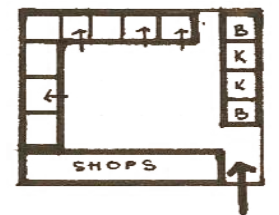
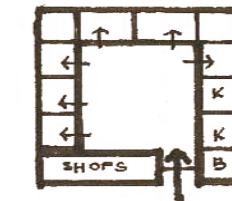
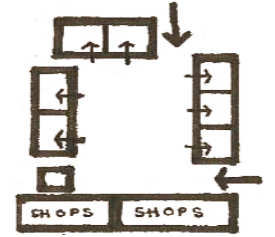
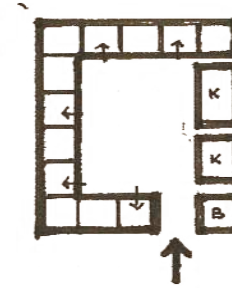
Reflects Black culture and gets you to dream for the future in new ways by integrating technology.

The Legacy Building Project will strive to engage with the community through technology, sustainability and education.



west african compound house

In West Africa, a compound house, or “compound,” is a traditional housing typology where multiple households or families live within a single building complex, often centered around a courtyard or communal space, **fostering a strong sense of community and shared living.**



west african compound house

key characteristics:

multi-habitation:

Multiple families or households reside within the same compound, sharing common spaces and resources.

central courtyard/communal space:

A central courtyard or communal area serves as a focal point for interaction and socializing.

shared resources:

The interconnected design promotes ease of interaction, shared resources, and a collective lifestyle that emphasizes collaboration.



west african compound house

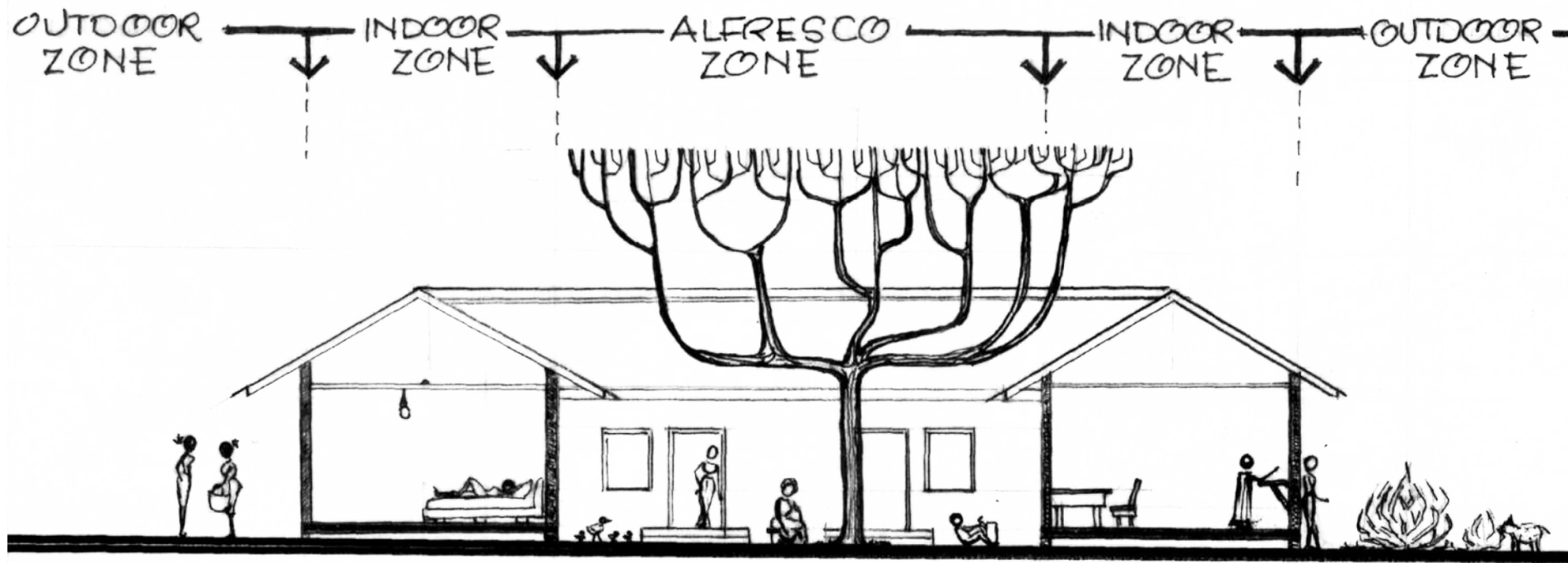
key characteristics:

ritual spaces:

Some compounds include a ritual space or “gbanla” (pronounced bah-lah) where family masks, native objects, and musical instruments are kept, serving as a protective space for the compound’s members.

community focus:

The compound house **fosters a strong sense of community and shared social and cultural values.**



community

Connection through:

Transparency, inclusion,
service, freedom of expression,
collaboration

Merging of forms and program-
allows for interaction between
different types of people

Atrium space acts as a gathering
space similar to the courtyard in a
compound house.



technology

Utilize technology to create a **energy efficient and sustainable building**



Merging of **natural locally sourced materials** and new **updated materials**



Combine **historic sustainability methods** with new **technology** (kinetic sun shading)



sustainability

key design aspects:

Building orientation: Maximize south-facing windows to capture winter sunlight for passive heating.

Utilize overhangs to shade windows during summer months, preventing excessive solar gain.

Passive solar design: Utilizing thermal mass materials, sunrooms, solar photovoltaic panels, etc.



education | engaging black history to inspire black futures

educating the:

History of Akron, Akron's Black community + the cultural and historic practices of West Africa (building technology and compound houses)



inspiring the future:

Embracing new technology based on old cultural practices and educating the community.



materials

museum + auditorium

Artificial light and indirect natural light (could include clerestory windows), material with acoustic properties

material: perforated metal + wood



tech center + business incubator spaces

Requires indirect light, could have north-facing windows

material: translucent glass + perforated metal



youth center + admin

Requires privacy and natural light, can include sunshading on windows

material: shaded windows + wood



community garden

garden / urban farm

Allows the community to be self-sustaining to grow and sell their own produce



sculptures / public art

Public art beautifies the neighborhood and allows for creativity to bloom

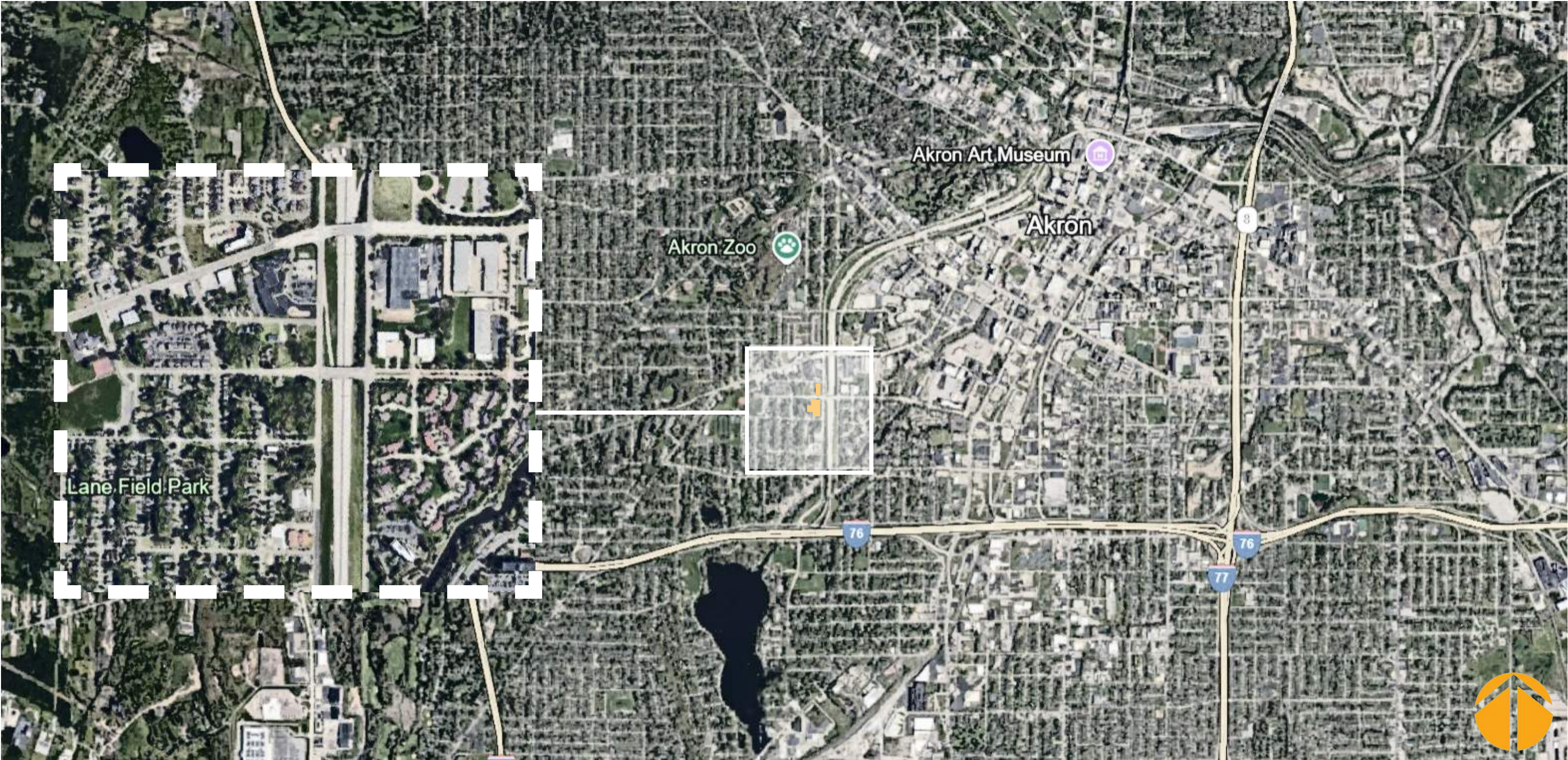


playground + outdoor event / gathering + merchant space

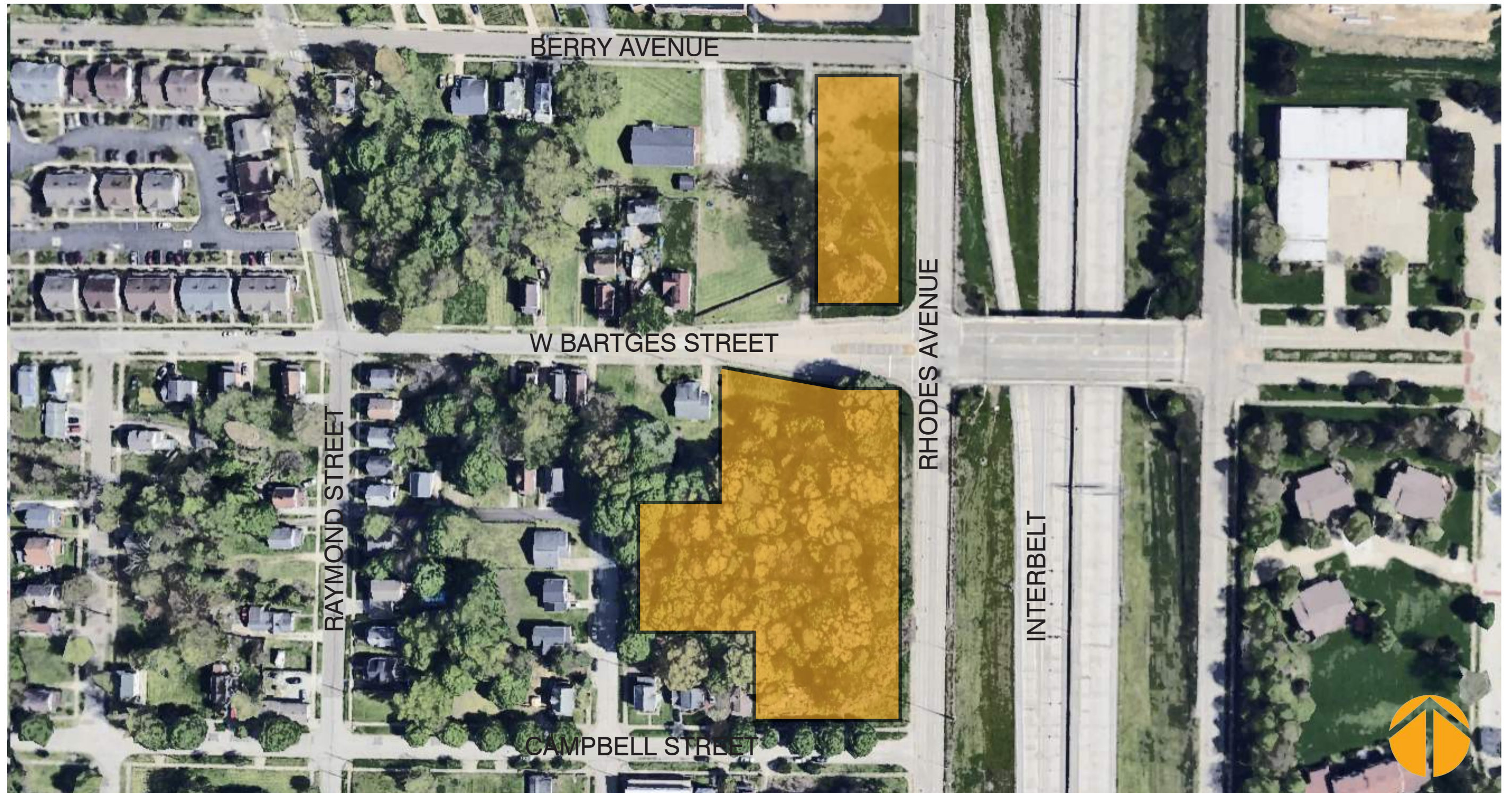
Allows for the youth to play and intergenerational connection through gathering spaces.



legacy building project site



legacy building project site



program adjacencies

total SF: 25,000 SF

administrative (1,000 SF)

conference rooms, single offices, reception

business incubator (1,900 SF)

co-working spaces, lounge/kitchenette,
conference rooms, private offices

museum (6,500 SF)

gallery

youth center (3,500 SF)

classrooms, teen room, library/indoor play area

lobby/multipurpose atrium space (6,100 SF)

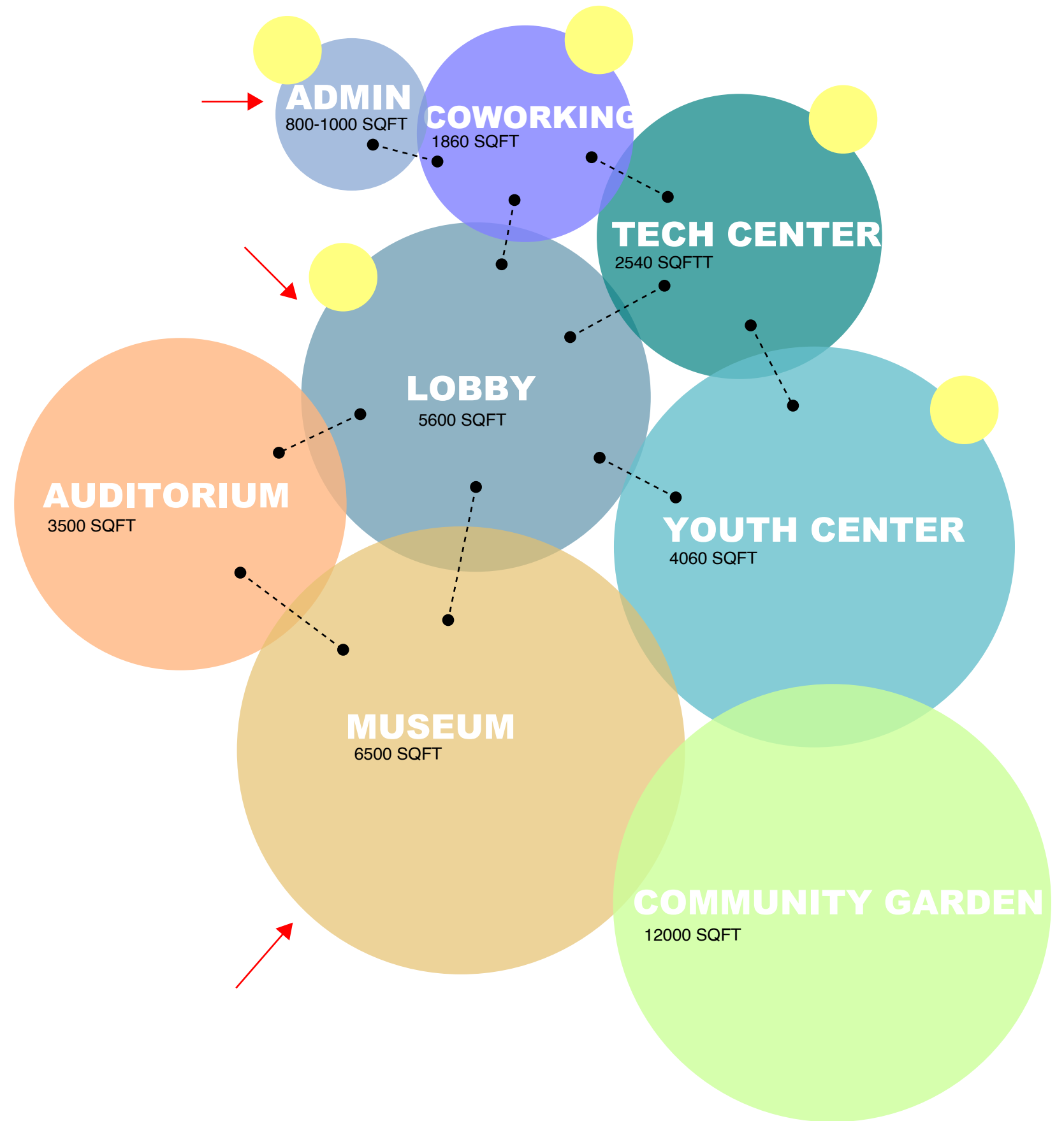
cafe, lounge, merchant space

auditorium (2,500 SF)

approx. 200 seats

community garden + urban farm

public art, gathering + merchant space,
playground

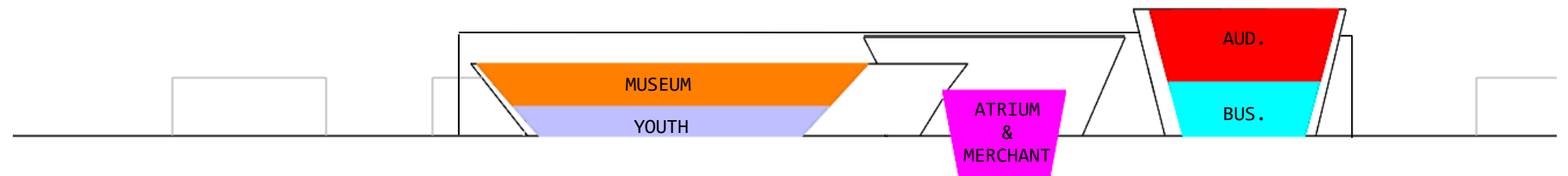
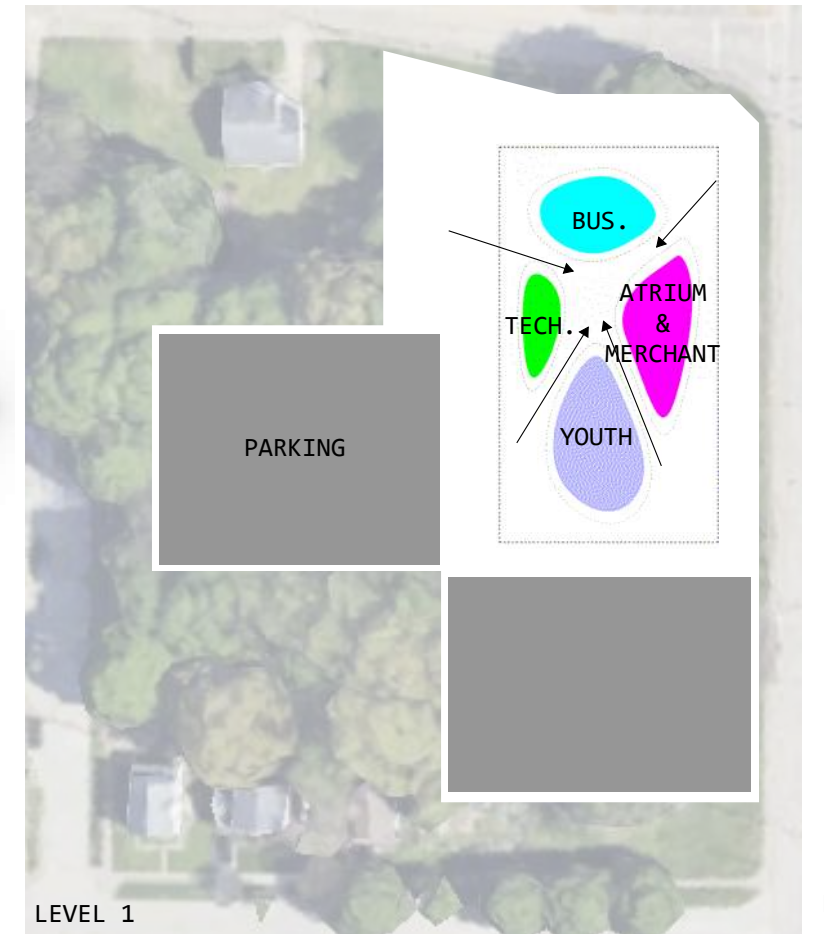
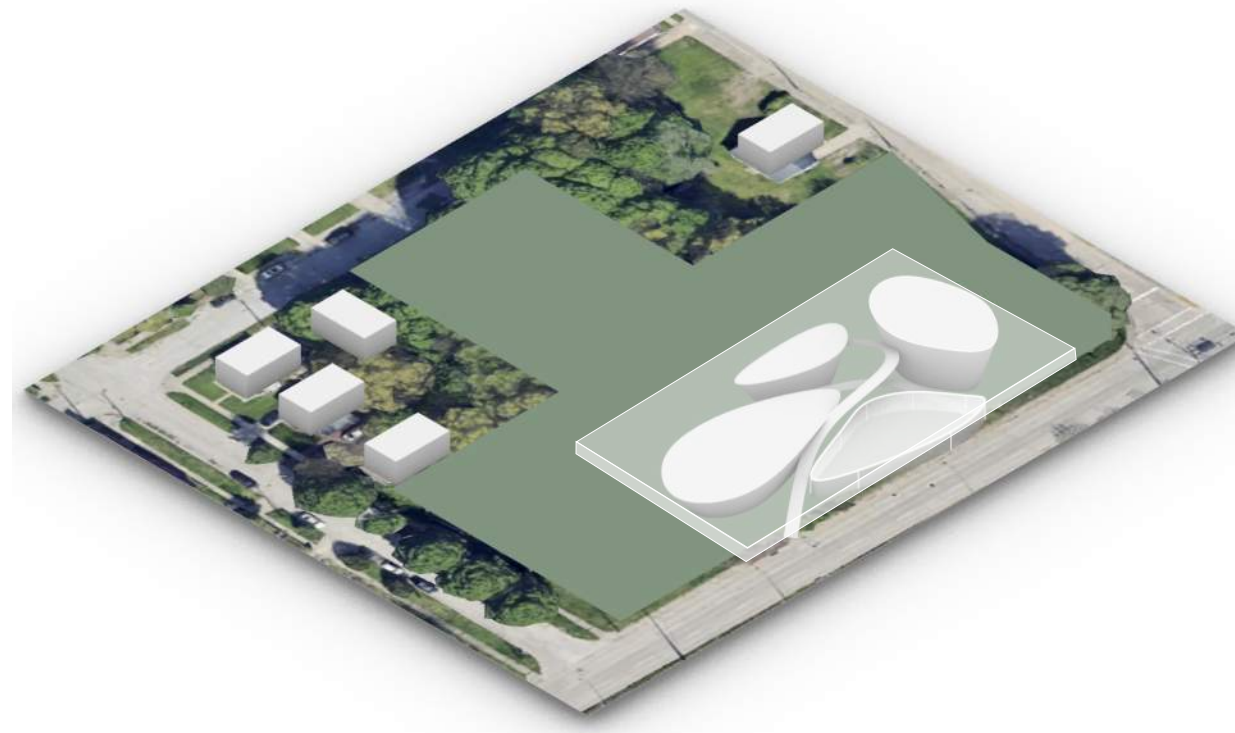


community compound diagram

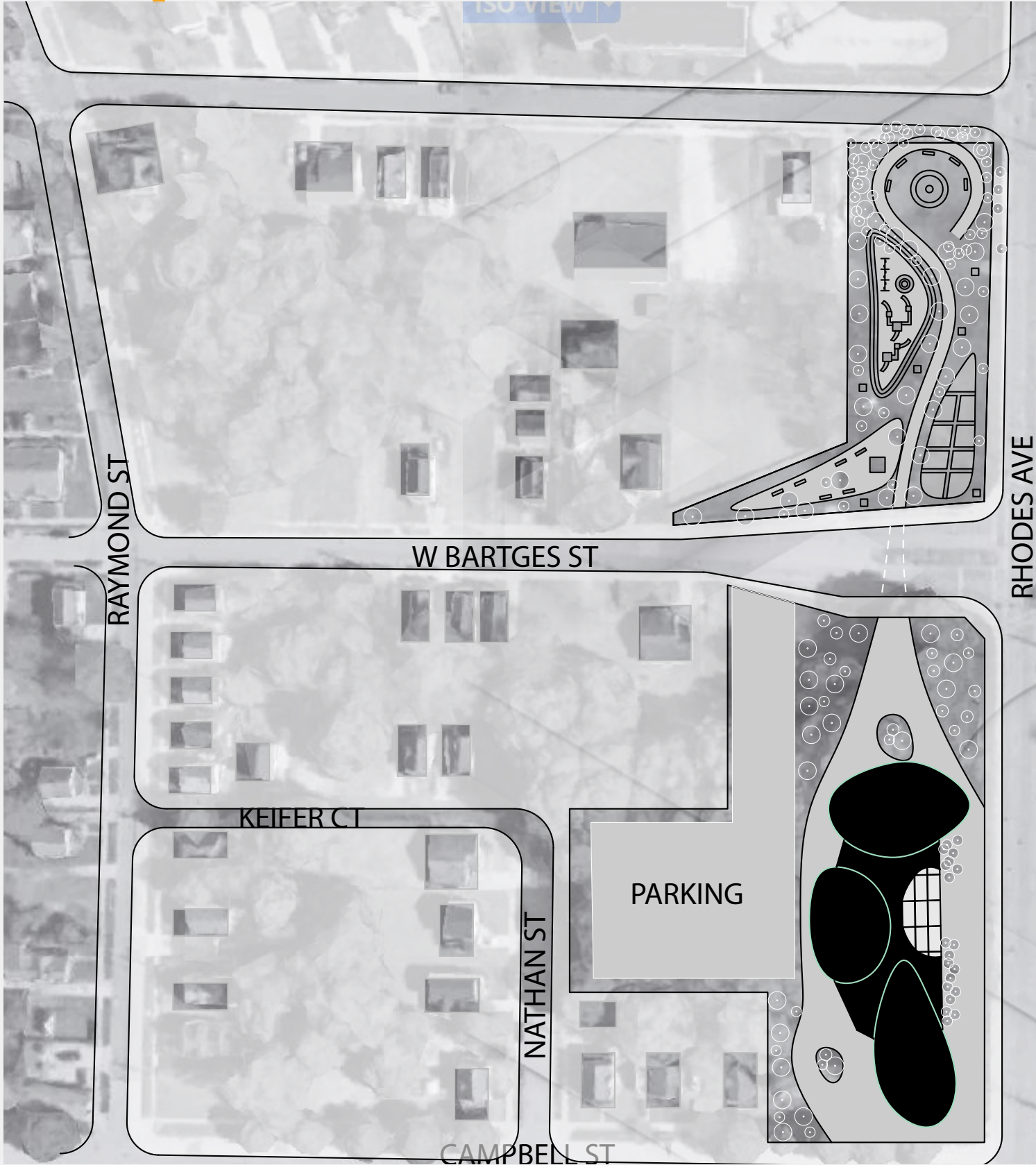
The central lobby/atrium space mimics the african compound house as the building's central gathering space.

The primary program spaces i.e. the auditorium, tech center, museum etc. are located in the concentric drum spaces.

Concentric spaces promote unity, collaboration, the sharing of resources, and a strong sense of community.



site plan



floor plans

LEVEL 3 KEY:

- 09 STORAGE
- 10 PREP KITCHEN
- 11 STORAGE / POOL

LEVEL 1 KEY:

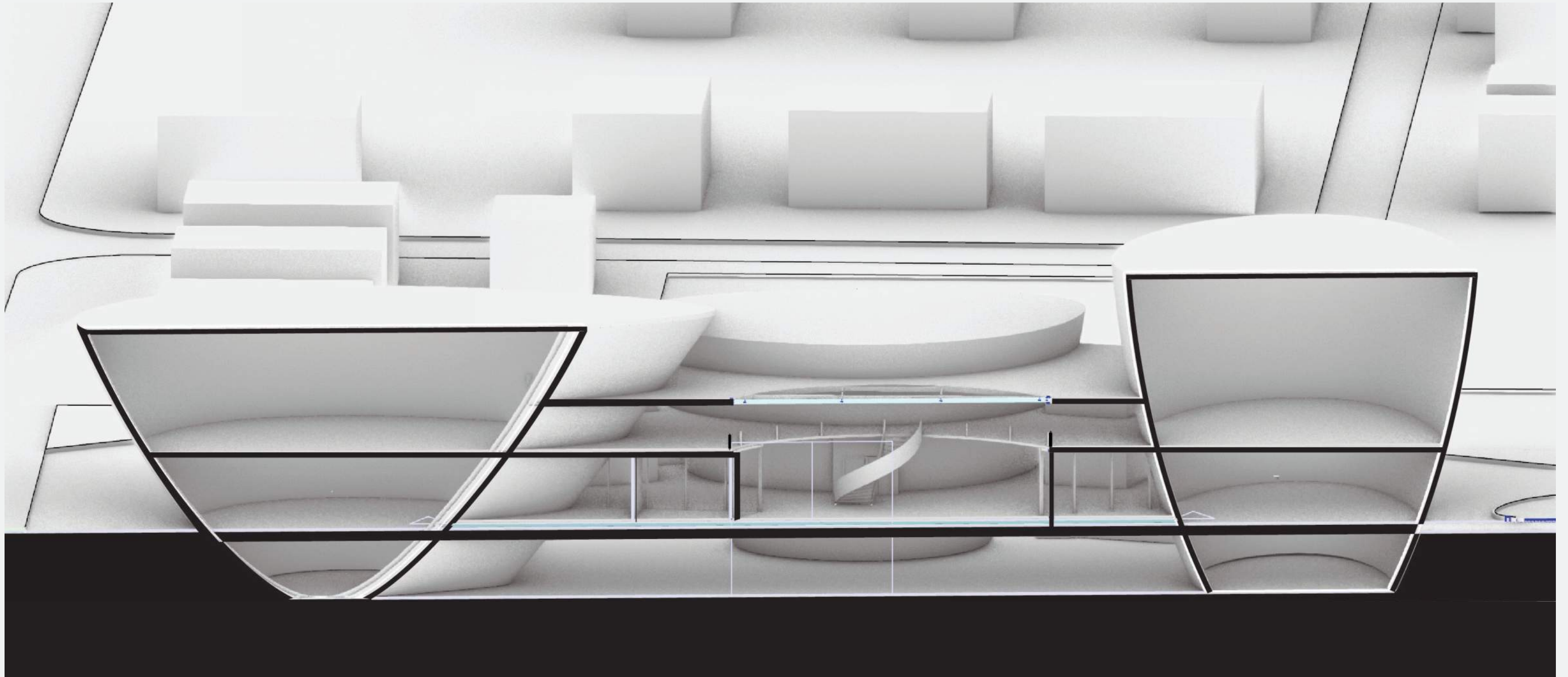
- 01 ATRIUM / LOBBY
- 02 TECH CENTER
- 03 YOUTH CENTER
- 04 BUSINESS INCUBATOR
- 05 MERCHANT SPACES

LEVEL 2 KEY:

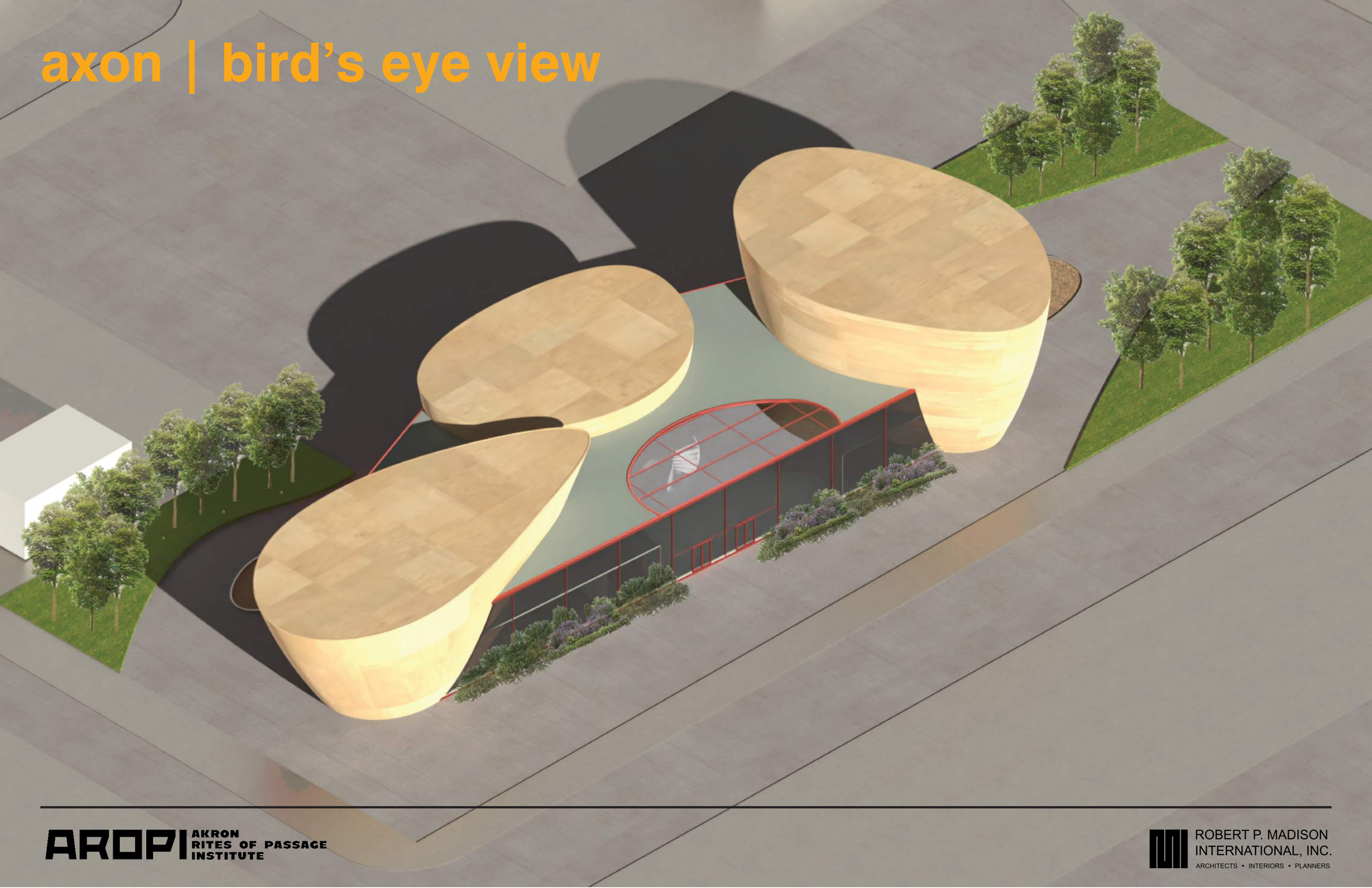
- 06 AUDITORIUM
- 07 ADMIN SPACE
- 08 MUSEUM



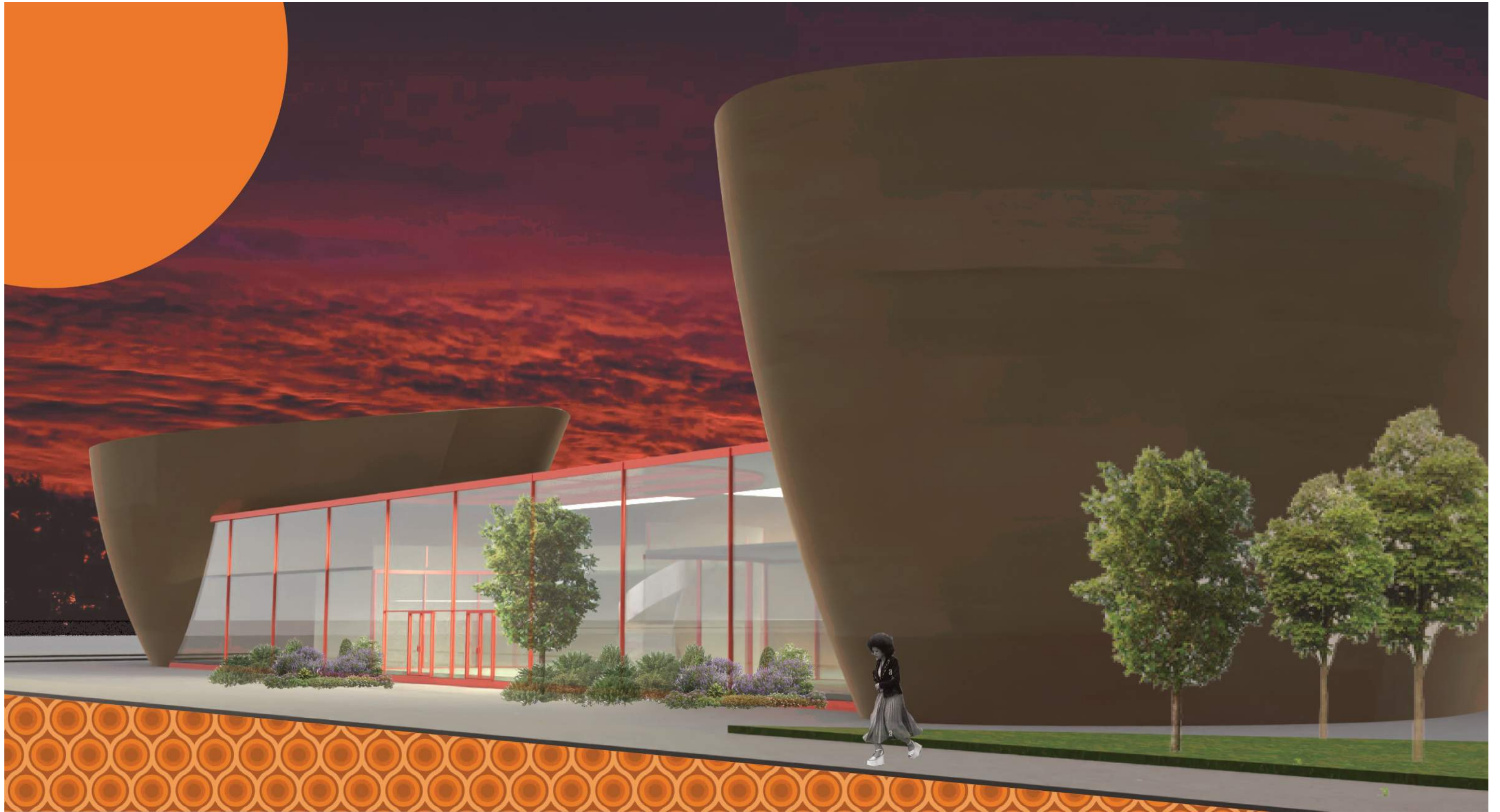
building section



axon | bird's eye view



perspective view | looking south from Rhodes Ave.



perspective view | looking north from Rhodes Ave.



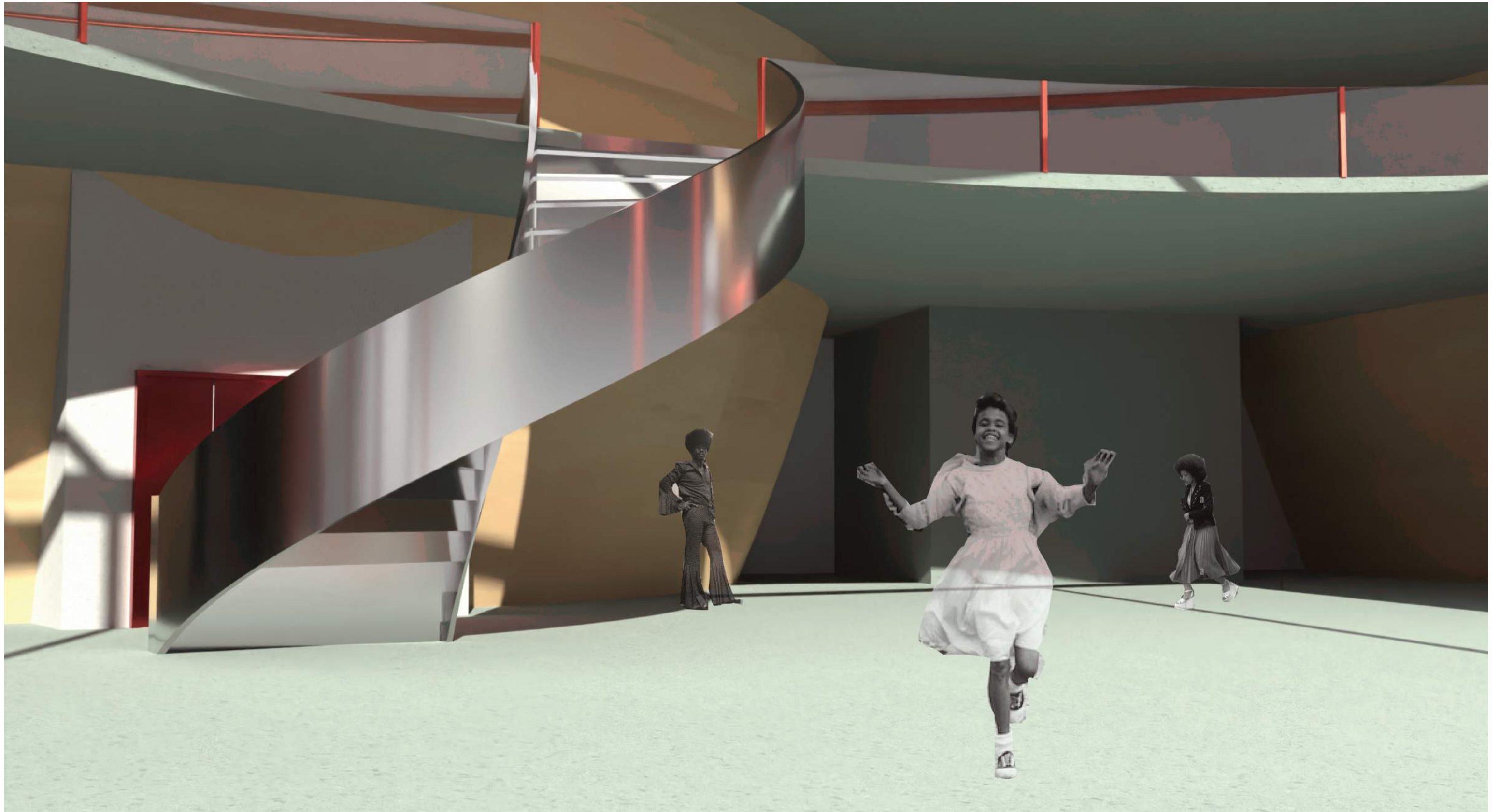
perspective view | looking east from the parking lot



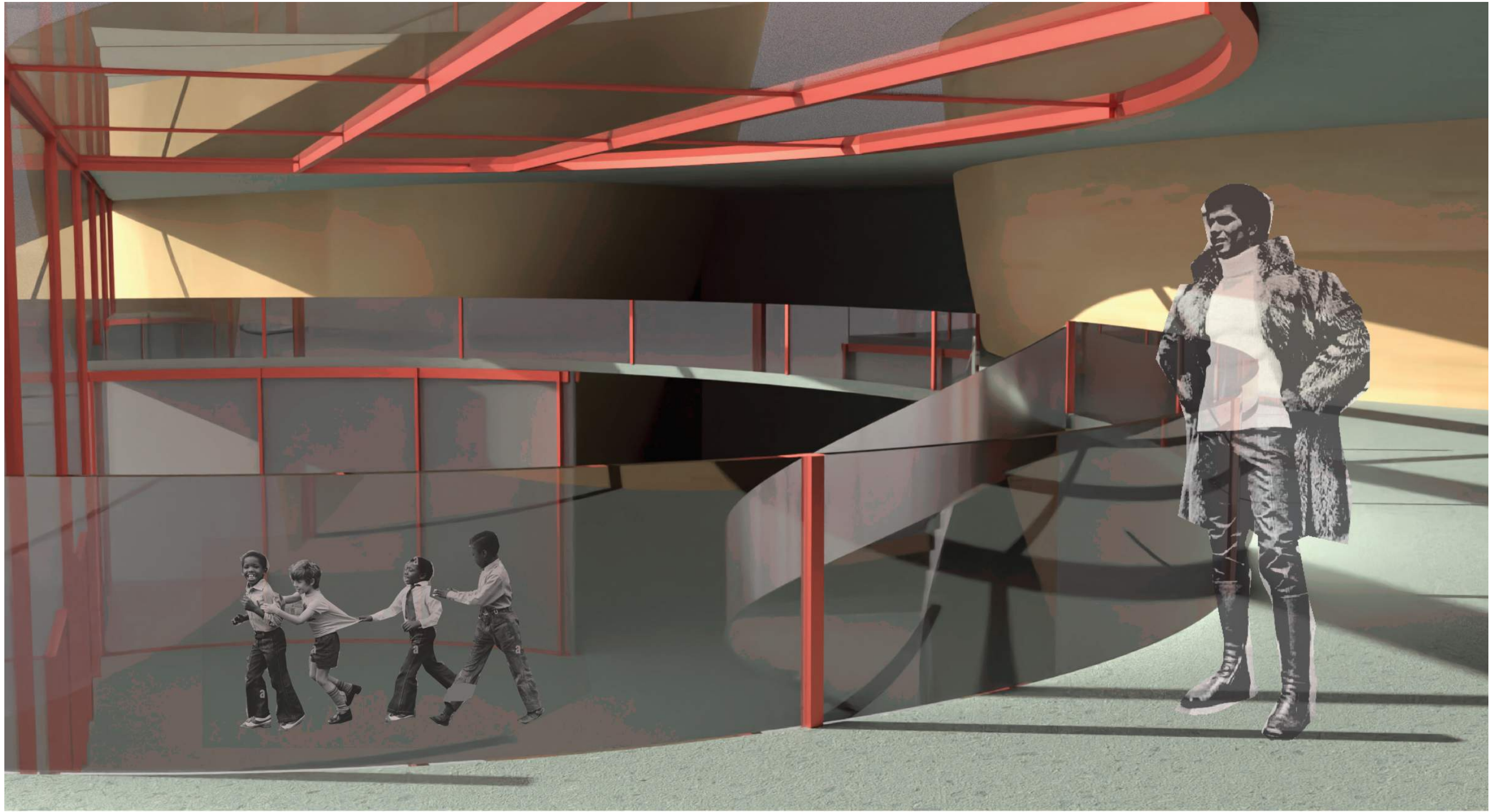
perspective view | lobby



perspective view | lobby



perspective view | second level lobby



perspective view | museum/gallery



